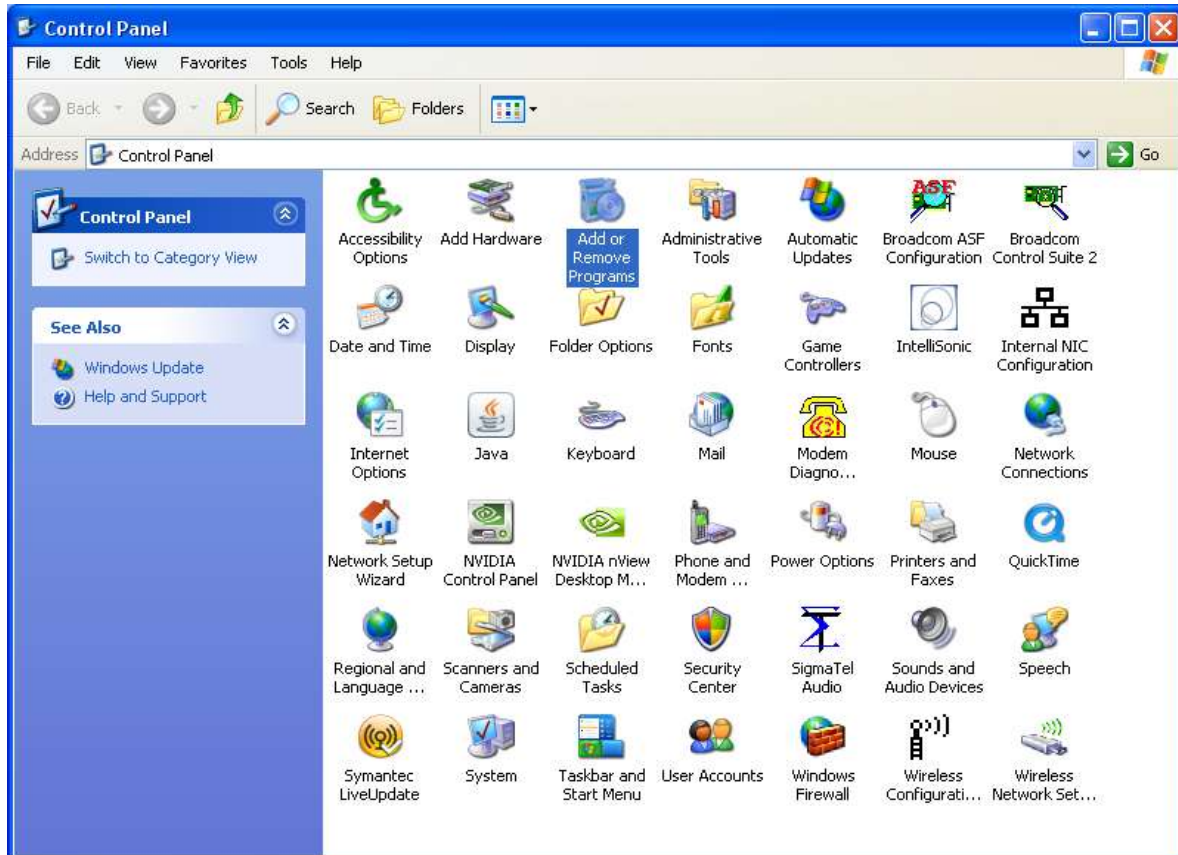


SMARTLOGIN® Removal Guide

Express

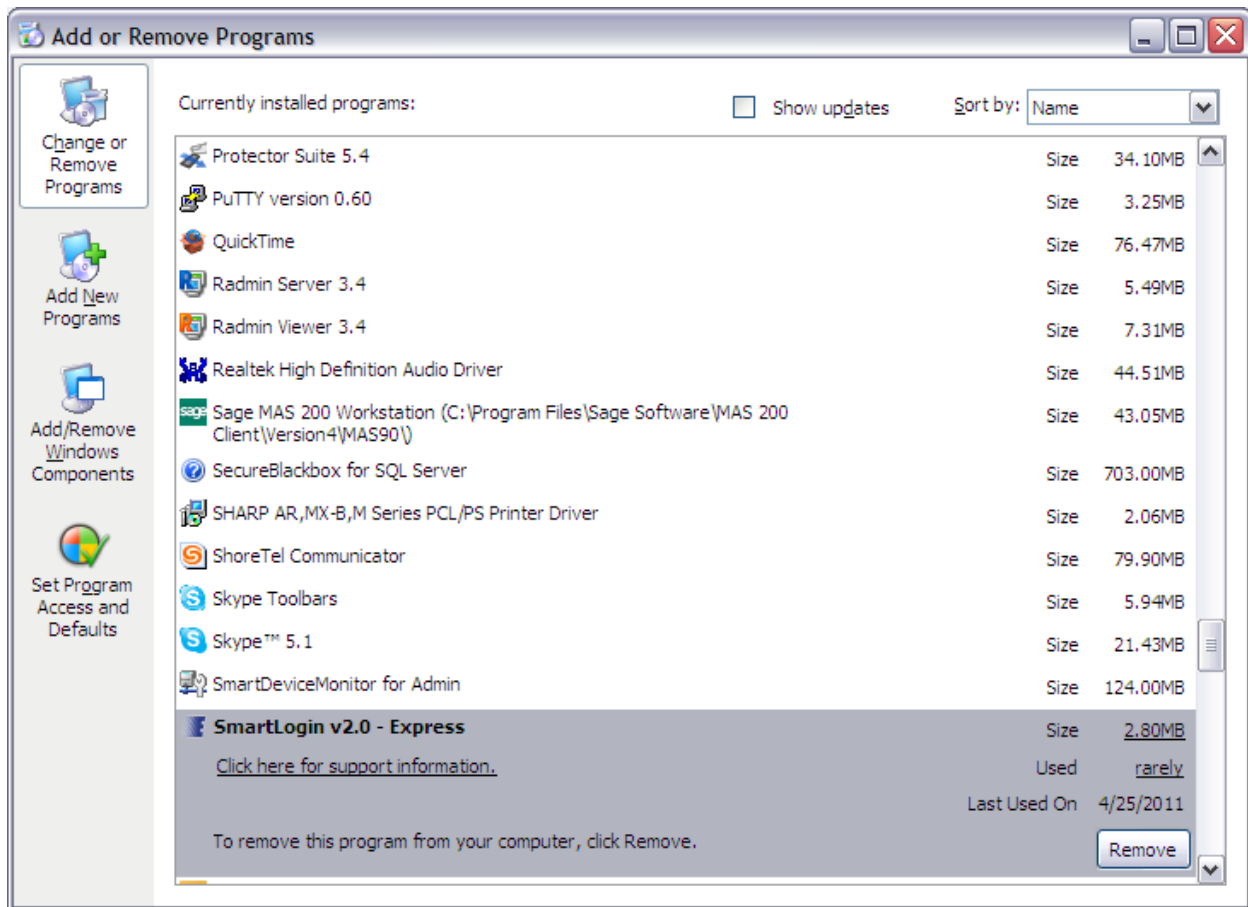
The Express SmartLogin® can be removed from your computer through the Add/Remove Programs feature of Windows®.

Add/Remove Programs is located in the Windows Control Panel as shown below.

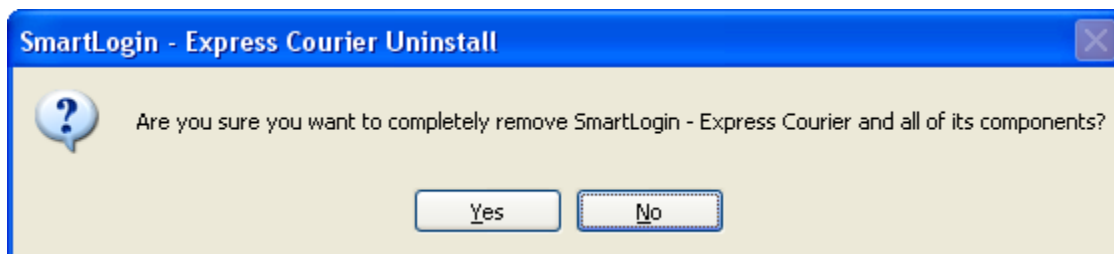


Double Click on Add/Remove Programs and a new window appears listing every program on your computer.

Scroll down to where you see SmartLogin v2.0 – Express, and click the Remove button.



You will then see a new window:



Click Yes to completely remove the Express SmartLogin® components.

After you click Yes you will get a new window letting you know that it was successfully removed.

